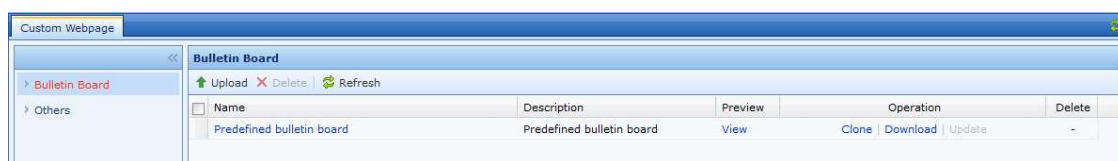


server. If the FTP server does not require authentication, you can leave it unchecked.

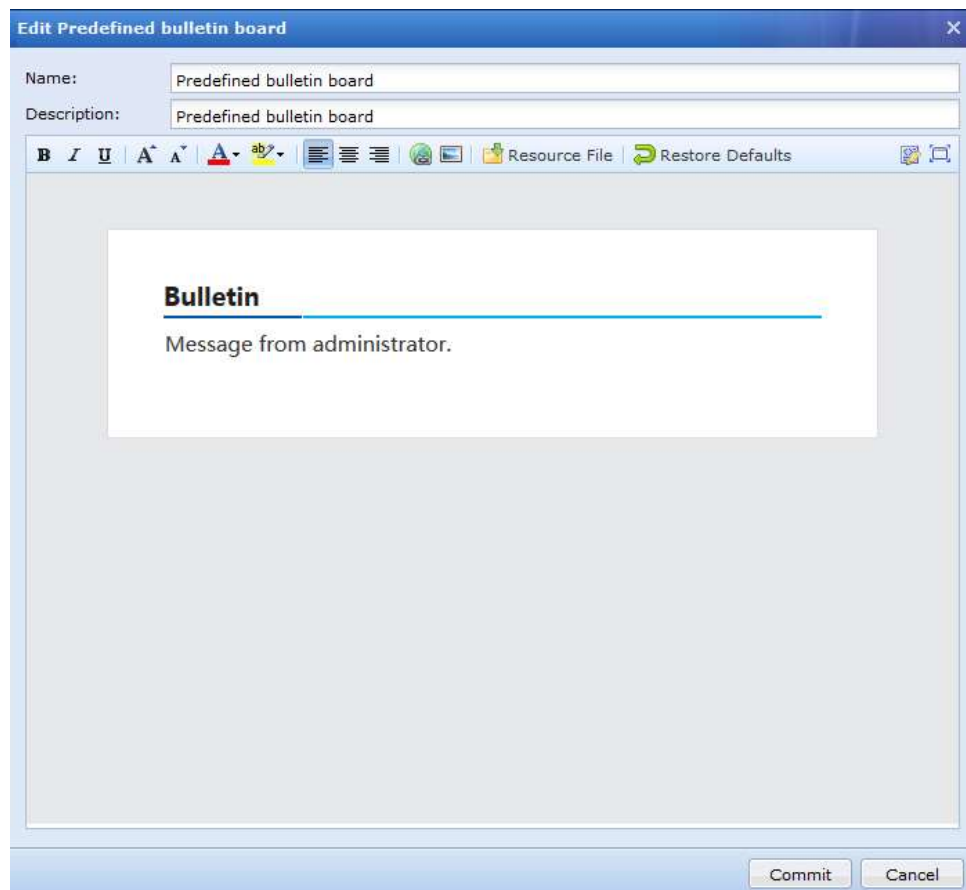
3.11.5.8 Custom Webpage

On the **Custom Webpage** page, you can define the custom page to which the device redirects. Two types of pages can be defined: **Bulletin Board** and **Others**, which include the following:

- Access Denied
- Virus Detected
- Daily Online Online duration quota has been Used Up
- Ingress Client
- Online duration quota is About to be Used Up
- Flow Quota is About to be Used Up
- Daily Flow Quota has been Used Up
- Monthly Flow Quota has been Used Up
- Traffic Reaches Threshold
- User Locked
- SSO Before Access
- Connection Sharing Detected
- Access on Mobile Devices is Denied





On the **Bulletin Board** pane, click the name of a Bulletin Board. The **Edit Predefined Bulletin Board** dialog box is displayed, as shown in the following figure.



In the **Edit Predefined Bulletin Board** dialog box, you can change the source code to change the page to be displayed. We recommend you change the text and pictures only. If you make other changes, some links will be missing.

Click **Resource File** to upload .jpg or gif pictures to be displayed on a customized page. Specifically, click **Resource File**, select an object to be uploaded, and change the picture and Java script name in **Edit Page**.

Click **Restore Default** to resume the original page.

Click  to display the code view to present text in the code format. Click  to display the customized Bulletin Board in full screen.

Click **Commit** to save the customized page. Click **View** to preview the customized page. Click **Clone** to copy the customized page.

Click **Download** to download the customized page. After modification, click **Update** to update a .zip package to configure the page.


For the customization of other pages, see the procedure for customizing a Bulletin Board.


3.11.5.9 Report Center

On the **Report Center** page, you can configure information about the external and internal report centers. The external report center contains server information, and the internal report center contains automatic log deletion options. See the following figure.



On the **Sync Policy** page, you can set the IP address of the external report center, name of the synchronization policy, Pre-Shared key, and Web-Access port of the report center.

Click  to test the connectivity between the device and the data center server.

Click  and the device will send an immediate synchronization instruction to the data center server to synchronize log data.

Click **External Report Center** to access the web UI of the external report center. The default username and password for logging in to the external report center are both **admin**. See the following figure.